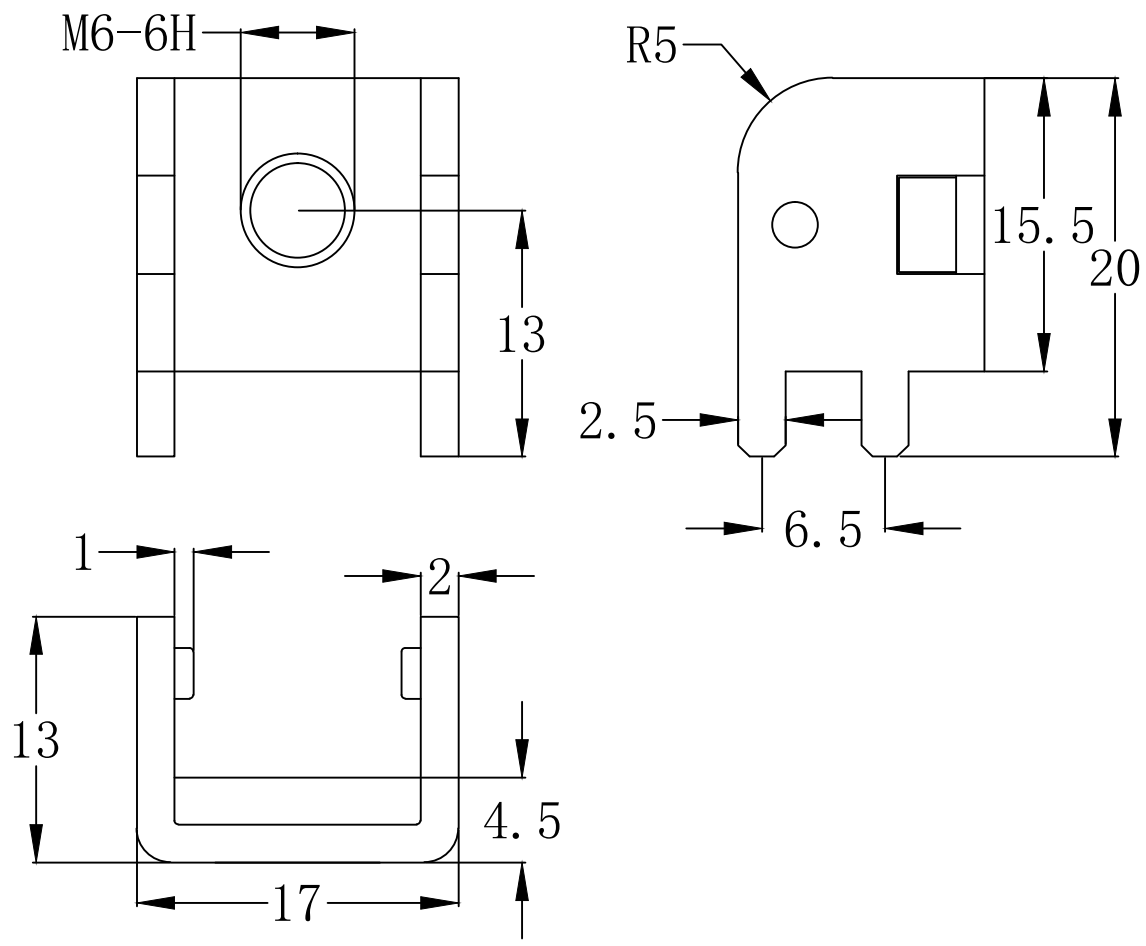


RoHS

| REV | ECN NO. | DESCRIPTION | DESIGN | APPROVAL | DATE |
|-----|---------|-------------|--------|----------|------------|
| A1 | NEW | 更换图框 | | | 2023.11.25 |

- 技术要求:
1. 打铜底0.5-1μm, 镍2-2.5μm, 哑锡3-5μm。
 2. 方垫铆好后不得有松动现象。
 3. 插脚尖部符合可焊性要求。
 4. 螺纹需符合通止规/止针要求。
 5. 螺纹扭矩: 2.5Nm。
 6. 额定电流: 150A。
 7. X为重点测量尺寸。



| | | | | | | |
|--|--------|----------------------------------|-------------------|-------|-------|-----|
| >30 ±0.40 | x.°± | PART NO: TTR64170200-1300 | XFCN 兴飞连接器 | | | |
| 0-30 ±0.30 | .x°± | | | | | |
| 0-6 ±0.20 | .xx°± | TITLE: PCB SOLDERING TERMINAL | 0769-82001899 | | | |
| ANGLES ±1° | .xxx°± | | www.xfconn.com | | | |
| UNITS: | mm | | DWG NO: / | | | |
| THESE DRAWINGS AND SPECIFICATIONS ARE THE PROPERTY OF XFCN AND SHALL NOT BE REPRODUCED, COPIED OR CUED IN ANY MANNER WITHOUT THE PRIOR WRITTEN CONSENT OF XFCN | | APPD | | VIEW | | |
| | | CHKD | | SCALE | SHEET | |
| | | DRAW | Wang | SCALE | SHEET | REV |
| | | DATE | 2023.12.08 | NONE | 1:1 | A1 |
| | | | | | | |

| | | | | |
|----|----|------|--------|----|
| 2 | 垫片 | | SPCC | 1 |
| 1 | 插脚 | | T2(Y2) | 1 |
| 序号 | 名称 | 零件编号 | 材质 | 数量 |