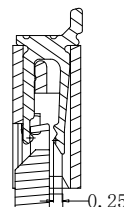
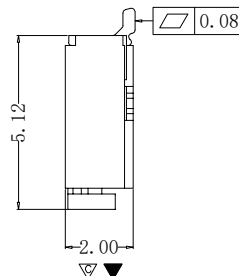
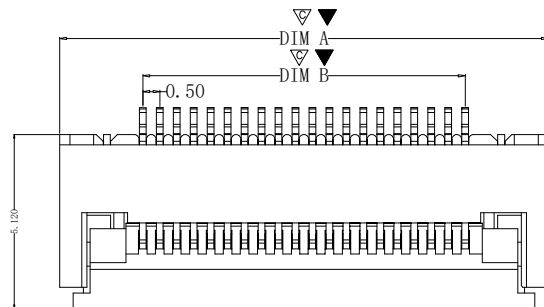


# RoHS

| REV | ECN NO. | DESCRIPTION | DESIGN | APPROVAL | DATE       |
|-----|---------|-------------|--------|----------|------------|
| A1  | NEW     | 更换图框        |        |          | 2023.11.25 |



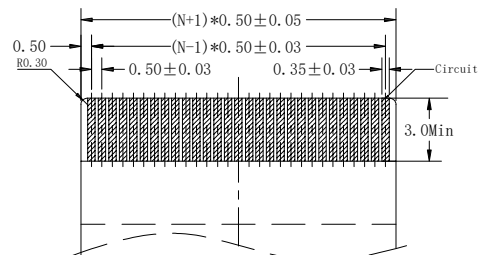
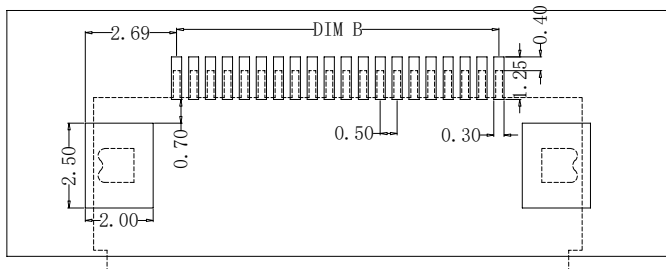
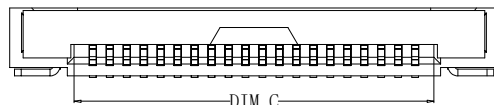
Ordering Code:

**F0502-B-xx-20T-R**  
1 2 3 4

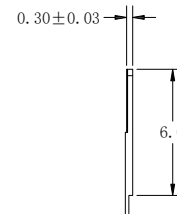
- 1. 序列号
- 2. Pin位数:04=04
- 3. 电镀方式:T=镀锡  
G=镀金
- 4. 包装方式:R=卷装  
T=管装(默认为空)

技术指标:

- 1. 塑件表面应光洁、无毛边、无明显收缩、缺陷、裂纹等现象。
- 2. 温度范围(Temperature range): -25℃~+85℃
- 3. 额定电流(Current rating):0.5A AC/DC
- 4. 额定电压(Rated voltage): 50V AC/DC
- 5. 接触电阻(Contact resistance): ≤0.03 Ω.
- 6. 绝缘电阻(Insulation resistance): ≥500M Ω. DC500V.



RECOMMENDED FPC/FFC DIMENSION



| CKT | DIM A | DIM B | DIM C | CKT | DIMA  | DIMB  | DIMC  |
|-----|-------|-------|-------|-----|-------|-------|-------|
| 4   | 6.40  | 1.50  | 2.57  | 33  | 20.90 | 16.00 | 17.07 |
| 5   | 6.90  | 2.00  | 3.07  | 34  | 21.40 | 16.50 | 17.57 |
| 6   | 7.40  | 2.50  | 3.57  | 35  | 21.90 | 17.00 | 18.07 |
| 7   | 7.90  | 3.00  | 4.07  | 36  | 22.40 | 17.50 | 18.57 |
| 8   | 8.40  | 3.50  | 4.57  | 37  | 22.90 | 18.00 | 19.07 |
| 9   | 8.90  | 4.00  | 5.07  | 38  | 23.40 | 18.50 | 19.57 |
| 10  | 9.40  | 4.50  | 5.57  | 39  | 23.90 | 19.00 | 20.07 |
| 11  | 9.90  | 5.00  | 6.07  | 40  | 24.40 | 19.50 | 20.57 |
| 12  | 10.40 | 5.50  | 6.57  | 41  | 24.90 | 20.00 | 21.07 |
| 13  | 10.90 | 6.00  | 7.07  | 42  | 25.40 | 20.50 | 21.57 |
| 14  | 11.40 | 6.50  | 7.57  | 43  | 25.90 | 21.00 | 22.07 |
| 15  | 11.90 | 7.00  | 8.07  | 44  | 26.40 | 21.50 | 22.57 |
| 16  | 12.40 | 7.50  | 8.57  | 45  | 26.90 | 22.00 | 23.07 |
| 17  | 12.90 | 8.00  | 9.07  | 46  | 27.40 | 22.50 | 23.57 |
| 18  | 13.40 | 8.50  | 9.57  | 47  | 27.90 | 23.00 | 24.07 |
| 19  | 13.90 | 9.00  | 10.07 | 48  | 28.40 | 23.50 | 24.57 |
| 20  | 14.40 | 9.50  | 10.57 | 49  | 28.90 | 24.00 | 25.07 |
| 21  | 14.90 | 10.00 | 11.07 | 50  | 29.40 | 24.50 | 25.57 |
| 22  | 15.40 | 10.50 | 11.57 | 51  | 29.90 | 25.00 | 26.07 |
| 23  | 15.90 | 11.00 | 12.07 | 52  | 30.40 | 25.50 | 26.57 |
| 24  | 16.40 | 11.50 | 12.57 | 53  | 30.90 | 26.00 | 27.07 |
| 25  | 16.90 | 12.00 | 13.07 | 54  | 31.40 | 26.50 | 27.57 |
| 26  | 17.40 | 12.50 | 13.57 | 55  | 31.90 | 27.00 | 28.07 |
| 27  | 17.90 | 13.00 | 14.07 | 56  | 32.40 | 27.50 | 28.57 |
| 28  | 18.40 | 13.50 | 14.57 | 57  | 32.90 | 28.00 | 29.07 |
| 29  | 18.90 | 14.00 | 15.07 | 58  | 33.40 | 28.50 | 29.57 |
| 30  | 19.40 | 14.50 | 15.57 | 59  | 33.90 | 29.00 | 30.07 |
| 31  | 19.90 | 15.00 | 16.07 | 60  | 34.40 | 29.50 | 30.57 |
| 32  | 20.40 | 15.50 | 16.57 |     |       |       |       |

|    |    |                |
|----|----|----------------|
| ④  | 焊片 | 铜合金/表面镀锡       |
| ③  | 后盖 | LCP UL94V-0 黑色 |
| ②  | 端子 | 铜合金/表面镀锡       |
| ①  | 基座 | LCP UL94V-0 本色 |
| 序号 | 名称 | 材质             |

|           |        |
|-----------|--------|
| X±0.50    | X.°±   |
| .X±0.25   | .X°±   |
| .XX±0.15  | .XX°±  |
| .XXX±0.10 | .XXX°± |
| UNITS:    | mm     |

THESE DRAWINGS AND SPECIFICATIONS ARE THE PROPERTY OF XFCN AND SHALL NOT BE REPRODUCED, COPIED OR CUED IN ANY MANNER WITHOUT THE PRIOR WRITTEN CONSENT OF XFCN

|          |                |                             |     |                   |  |
|----------|----------------|-----------------------------|-----|-------------------|--|
| PART NO: |                | F0502-B-xx-20T-R            |     | <b>XFCN</b> 兴飞连接器 |  |
| TITLE:   |                | FPC0.5mmPitch 掀盖卧式下接(H=2.0) |     | 0769-82001899     |  |
|          |                |                             |     | www.xfconn.com    |  |
|          |                |                             |     | DWG NO: /         |  |
| APPD     | Chen ZhiQiang  | VIEW                        |     |                   |  |
| CHKD     | Liu Wei        | SCALE                       |     |                   |  |
| DRAW     | Chen HongJiang | SHEET                       | 1/1 | REV               |  |
| DATE     | 2024.05.28     | NONE                        | A1  |                   |  |